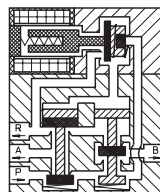


Type MR 900

4-way manifold valves, pilot operated, with parallel control unit

Application
compressed air
and neutral gases



Type/ Order No.	Orifice [mm]	Port size	Pressure [bar]	kv-value [m³/h]	Weight [kg]	Manual override
MR 900-001	4,0	Tube O.D. 6	1,5 - 8,0	0,39	1,5	with
MR 900-002	4,0	Tube O.D. 6	1,5 - 8,0	0,39	1,5	without

Sealing material: **P** (NBR)

Inner parts: Stainless steel
Max. ambient temp.: 50 °C
Operating voltage: DC: 24 V, 12 V
Voltage tolerance: -15%... +10%

Body material: Aluminum (anodized)
Mounting direction: free
Power consumption: 1 W each valve
Duty cycle: 100 %
Degree of Protection (EN 60529): IP 54 (IP 64)
Electrical connection: see page 430

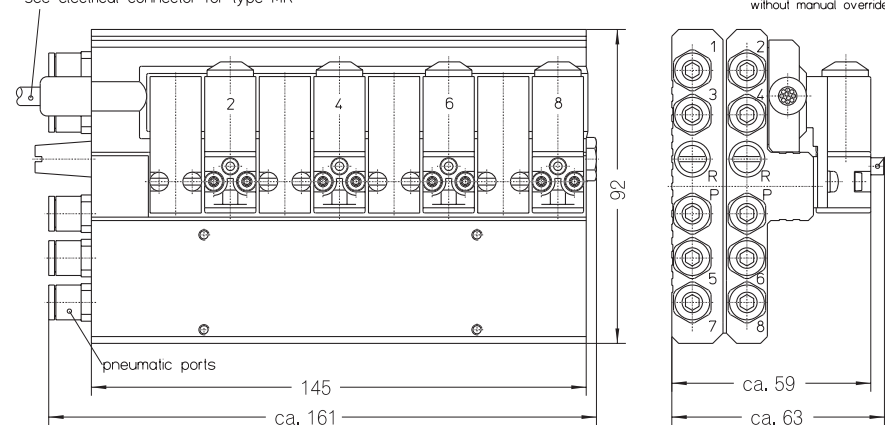
402

Other configurations upon request

The right to modification is reserved

staiger

see electrical connector for type MR



Mounting types and accessories see page 432



Dimensions in mm

403